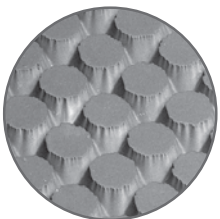


MAKE A LASTING IMPRESSION WITH

**XCORR**<sup>TM</sup>  
DIGITAL PLATE SYSTEM



**ONE SMALL STEP FOR CSW,  
ONE GIANT LEAP FOR PACKAGING.**



SHARPER DETAILS  
INCREASED RESOLUTION  
SMOOTHER GRADATIONS  
REDUCED FLUTING

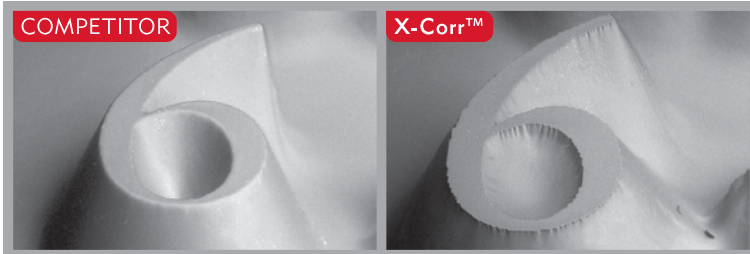


**csw inc**  
packaging made better  
800-800-9522 [cswgraphics.com](http://cswgraphics.com)

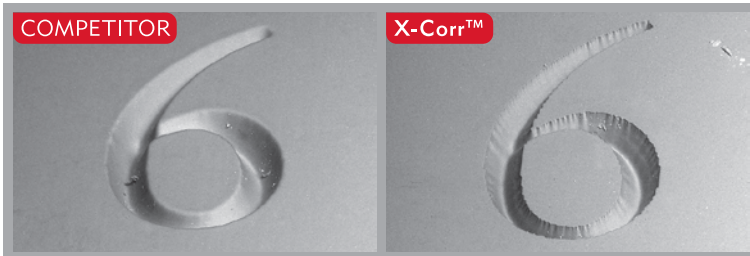
# MAKE A LASTING IMPRESSION WITH



**CSW's X-Corr™ Digital Plate System delivers dramatically improved print results. Its flat topped dot structure helps corrugated printers to decrease dot gain and reduce fluting while maintaining speed on the most challenging substrates.**



**POSITIVE TEXT** All printers will benefit from cleaner reproduction of fine details and text. In addition, studies have shown that X-Corr™ plates dramatically reduce fluting on corrugated board.



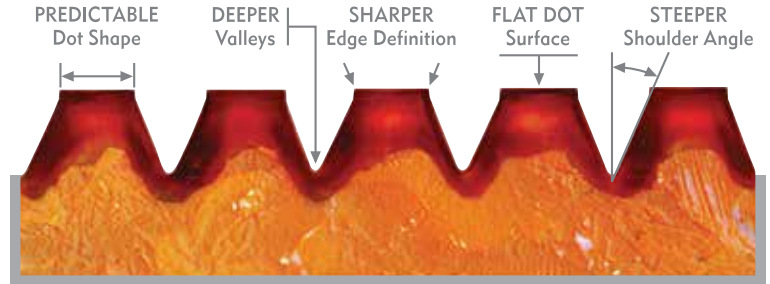
**NEGATIVE TEXT** Similar advantages are gained from crisper reverses, as well as more open mid-tones and shadows. These plates are also proven performers under increased print impression.

## Innovative technology with wide-ranging applications

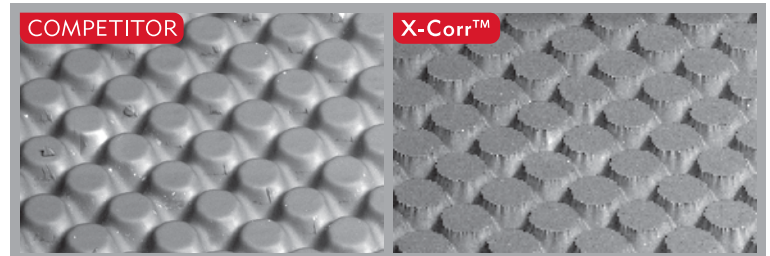
The X-Corr™ Digital Plate System was developed specifically for end users who are looking to increase shelf impact by demanding uncompromised quality from corrugated flexo printing. It brings together optimized digital plate characteristics, a unique 52" x 80" large format, and robust flexo screening engineered for both post-print and pre-print substrates. Available plate thicknesses range from .107" to .250". The X-Corr™ Digital Plate System is sustainable, since no silver-based film in our process means no heavy metals or darkroom chemistry. There are no special requirements for plate storage and care.

## Outstanding print latitude delivered across multiple substrates

X-Corr™ helps to resolve many print challenges such as low resolution, lack of detail, compressed tonal range, excessive dot gain, fluting, hard edges, "dirty" halftones, and screen banding. Because these plates are produced via linear output,



**CROSS SECTION** CSW's X-Corr™ Digital Plate System has been developed with these optimized plate characteristics to improve print performance.



**DOTS** X-Corr™ dots are sharper, steeper and are produced with linear output. No "bump" curve means an expanded tonal range, improved contrast, wider color gamut, and greater predictability on press.

no "bump" curve is needed – resulting in expanded tonal range, and improved contrast. Flexo plates made with X-Corr™ technology print cleaner and longer, across a variety of substrates and thicknesses, high volume aniloxes and high impression settings.

## Stronger, sharper, smoother print on corrugate

CSW's X-Corr™ Digital Plate System is ideal for flexographers who require stronger reproduction of fine detail, open reverses and smooth gradations. Due to an oxygen-free photopolymerization process, X-Corr™ plates offer a more robust dot structure, with steep shoulders and deep reverse etch depth. Many corrugated printers are able to print higher line screens when using X-Corr™ plates. Vignettes can fade out to 1%-2% highlights and stay open in the mid-tones and shadows – without compromising solid area densities, plate longevity or print consistency.

Take a giant leap forward with X-Corr™.

**SHARPER DETAILS**  
**INCREASED RESOLUTION**  
**SMOOTHER GRADATIONS**  
**REDUCED FLUTING**



**csw inc**  
packaging made better  
800-800-9522 [cswgraphics.com](http://cswgraphics.com)